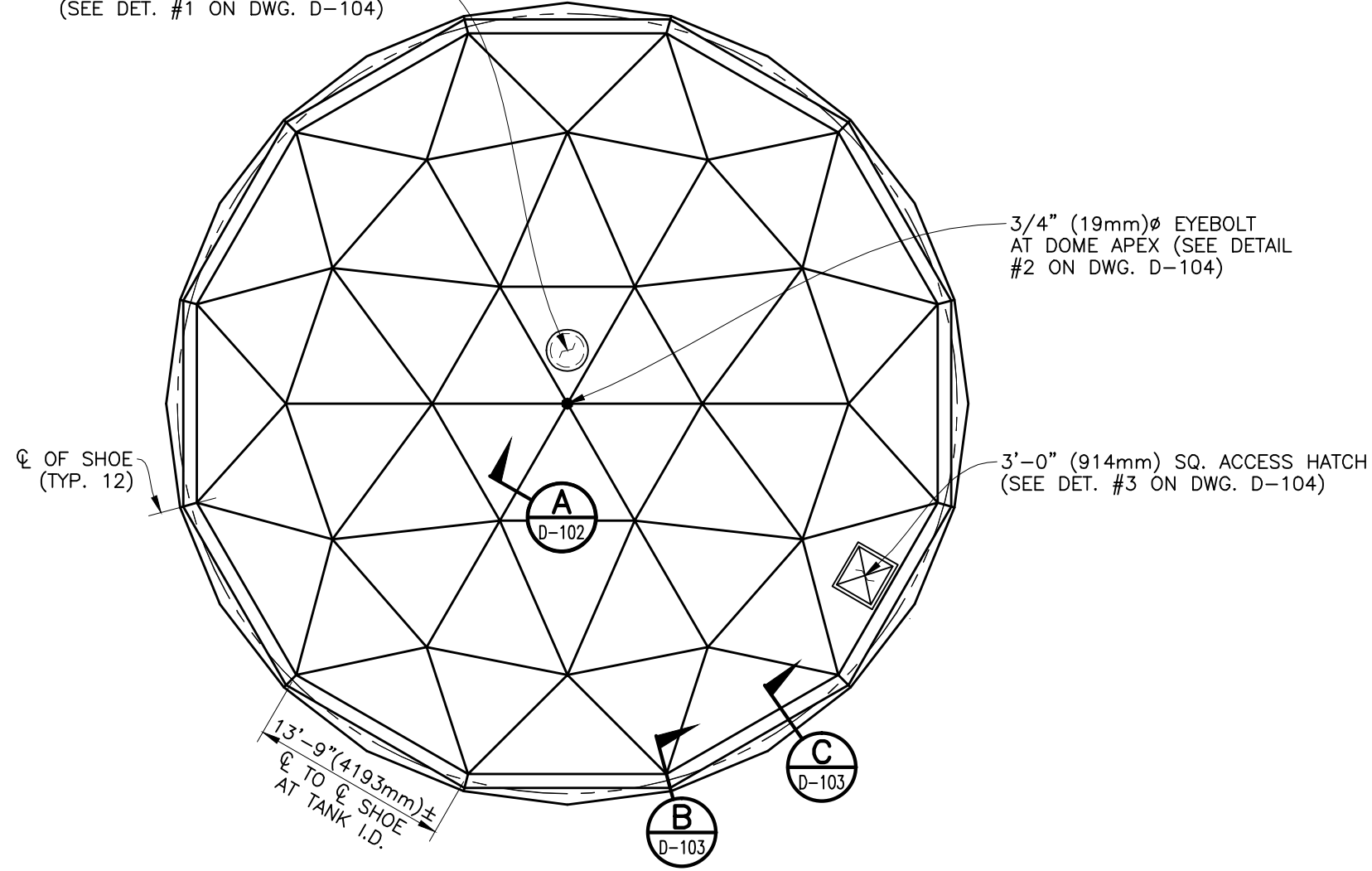
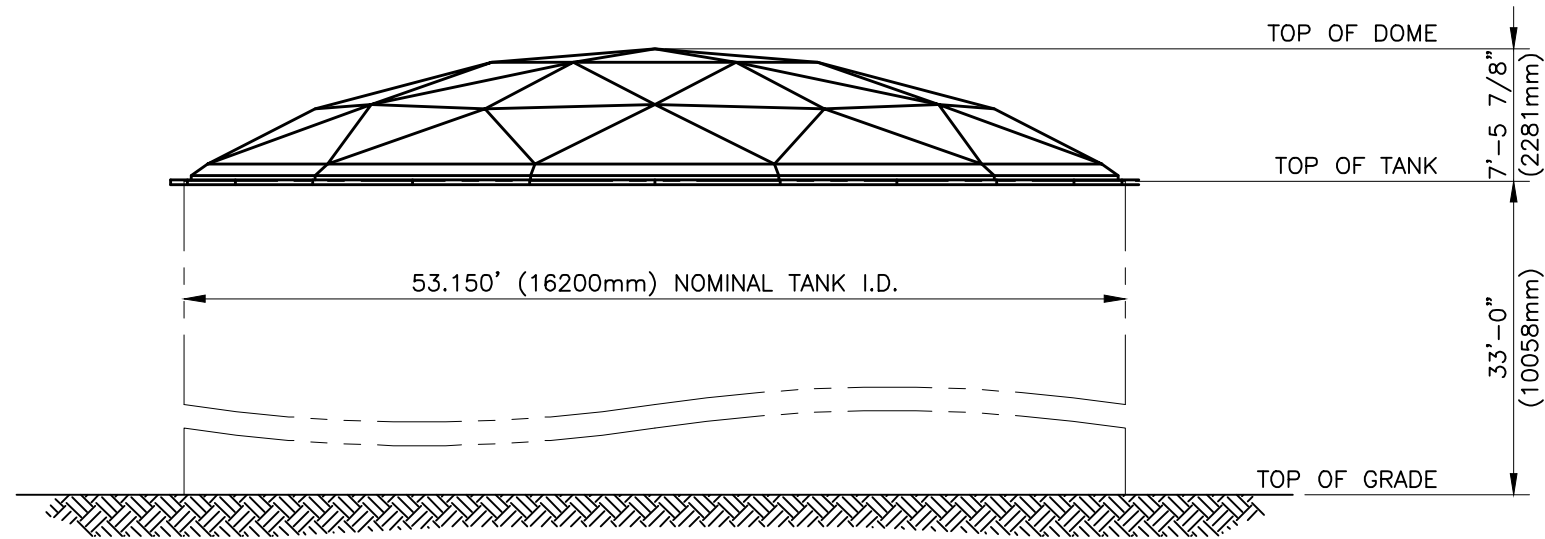


24" (610mm) GRAVITY VENT W/ INSECT SCREEN (SEE DET. #1 ON DWG. D-104)



**PLAN**



**ELEVATION**

DWG. TITLE

DOME PLAN AND ELEVATION

PROJECT DESCRIPTION

(1) DOME FOR 53.15' ± I.D. TANK

JOB NO.

DRAWING NO.  
D-100

REVISION

0

CUST. CONTR. NO.

**CST of a Dome**  
COVERS  
GARDENA, CA CONROE, TX

ALL DESIGNS, IDEAS, PROCESSES OR DEVELOPMENTS ORIGINATED OR DISCLOSED BY CST COVERS ARE PROPRIETARY, PATENTED OR THE SUBJECT MATTER FOR PATENT APPLICATION, AND MAY NOT BE REPRODUCED WITHOUT WRITTEN PERMISSION FROM CST COVERS

FOR APPROVAL

CHKD BY

kmw

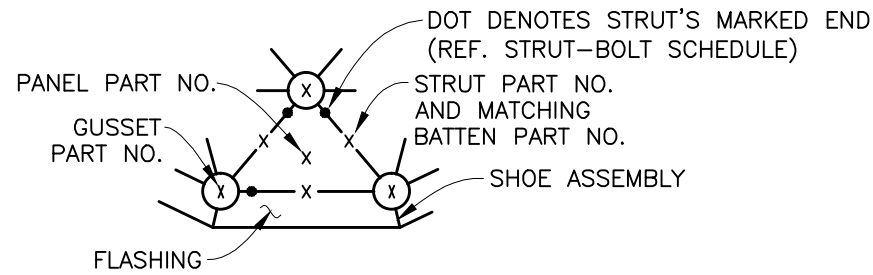
DATE:

01/06/16

REV.

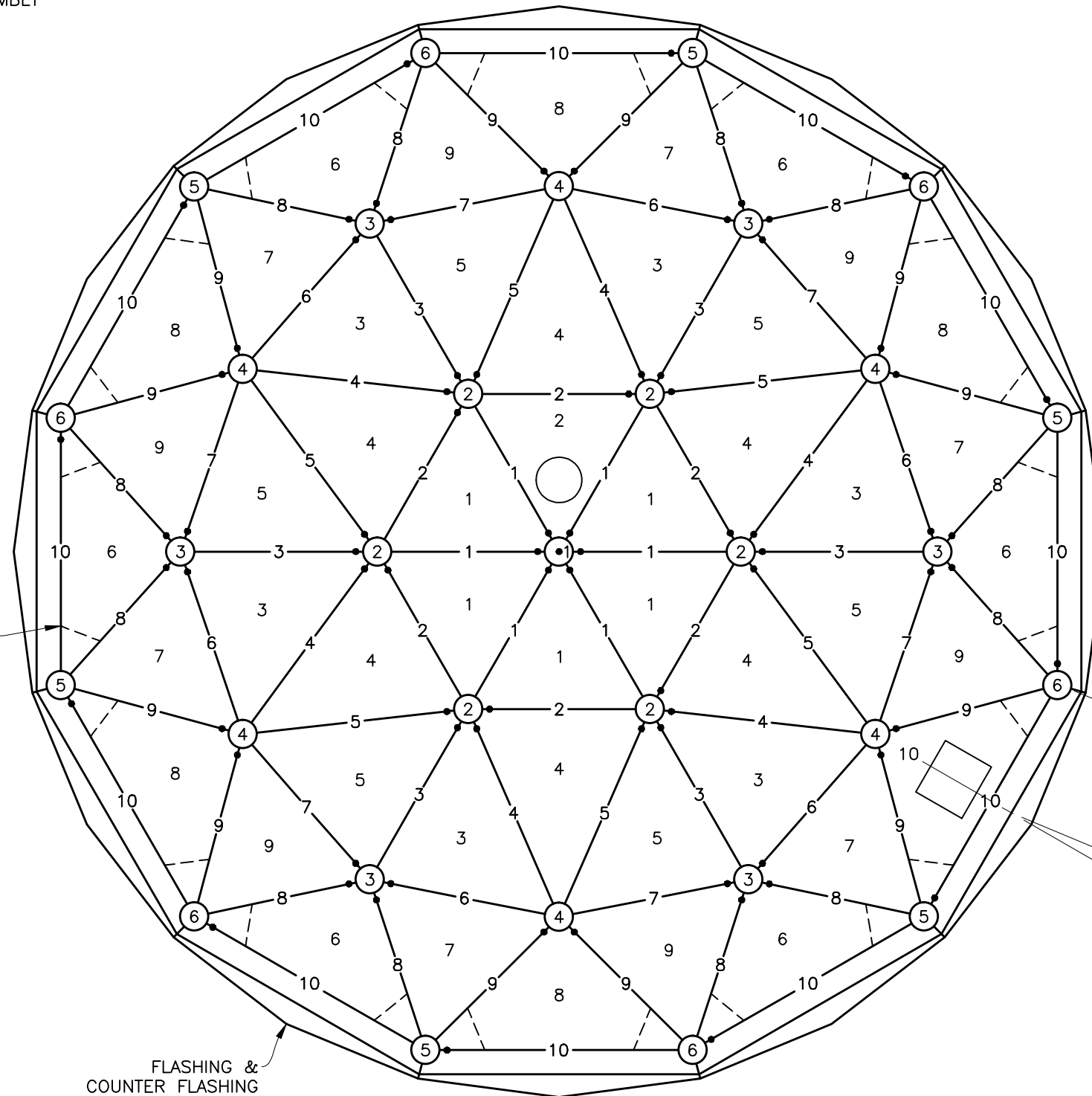
0

CUSTOMER



**DOME LEGEND**

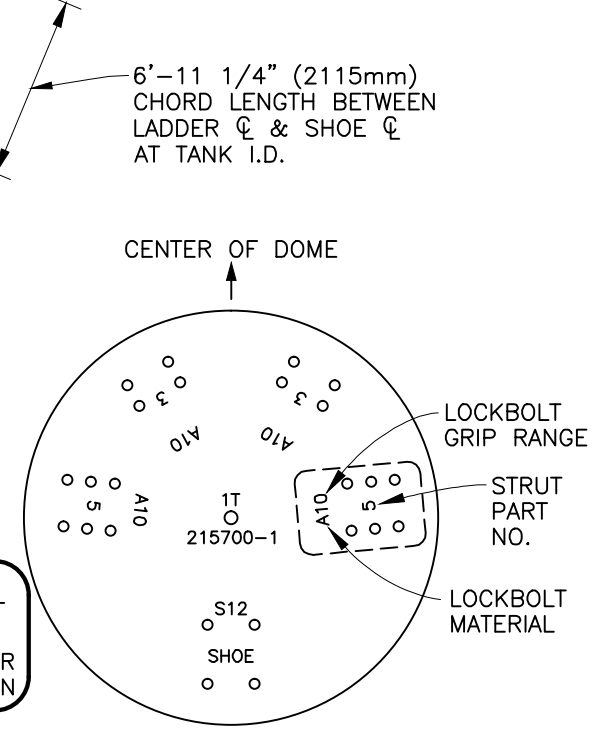
EDGE STRUT BRACE #40202  
TYP. AT TENSION RING STRUT  
(SEE DWG. D-106)



FLASHING & COUNTER FLASHING

**PLAN**

**INSTALLATION NOTE:**  
ALIGN GUSSET PART NO. AND CONTRACT NO. TOWARD CENTER OF DOME AS SHOWN



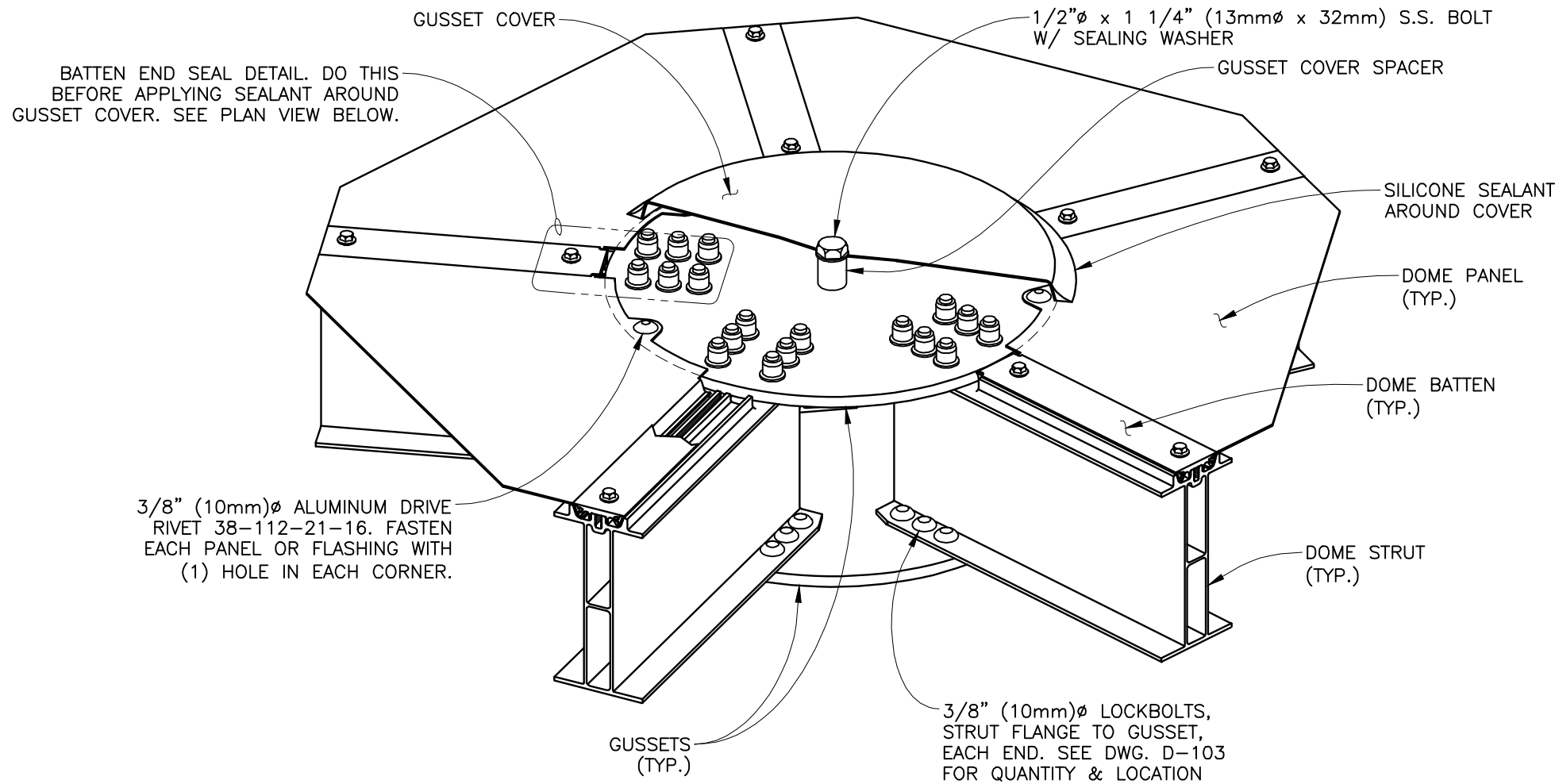
**GUSSET ORIENTATION & BOLT PATTERN LEGEND (EXAMPLE ONLY)**

**CST of Idaho**  
COVERS  
GARDENA, CA CONROE, TX

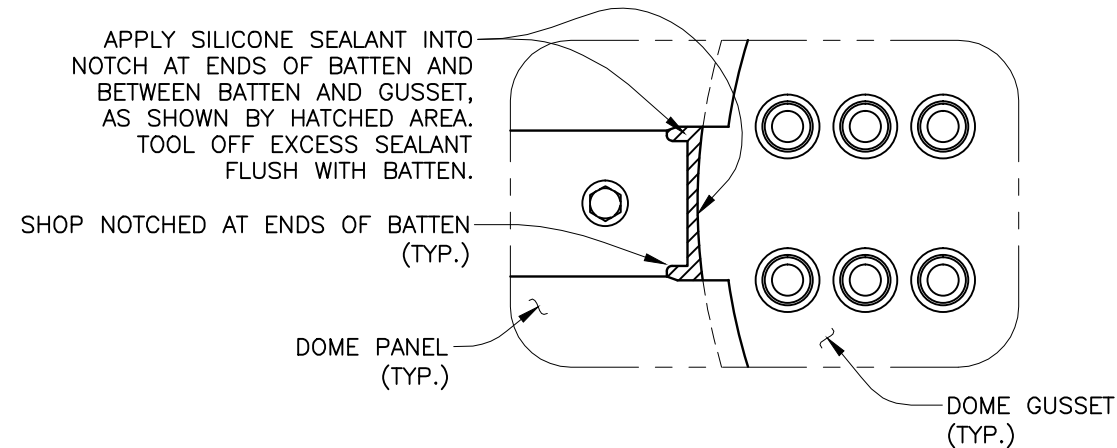
ALL DESIGNS, IDEAS, PROCESSES OR DEVELOPMENTS ORIGINATED OR DISCLOSED BY CST COVERS ARE PROPRIETARY. PATENTED OR THE SUBJECT MATTER FOR PATENT APPLICATION, AND MAY NOT BE REPRODUCED WITHOUT WRITTEN PERMISSION FROM CST COVERS

0	01/06/16	kmw	FOR APPROVAL
REV.	DATE:	DRWN BY	CHKD BY
CUSTOMER			DESCRIPTION

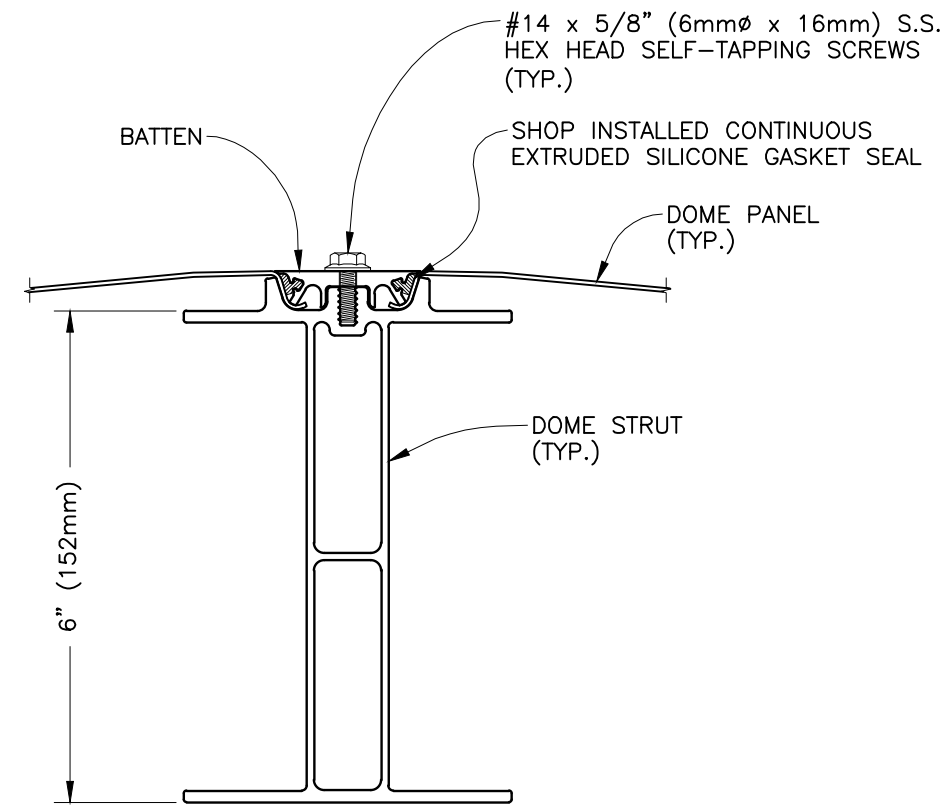
DOME ASSEMBLY		CUST. CONTR. NO.	
PROJECT DESCRIPTION		REVISION	0
(1) DOME FOR 53.15' ± I.D. TANK		DRAWING NO.	D-101
DWG. TITLE		JOB NO.	



**TYPICAL GUSSET JOINT**



**BATTEN END SEAL PLAN DETAIL**



**TYPICAL DOME STRUT**

**A**  
D-101

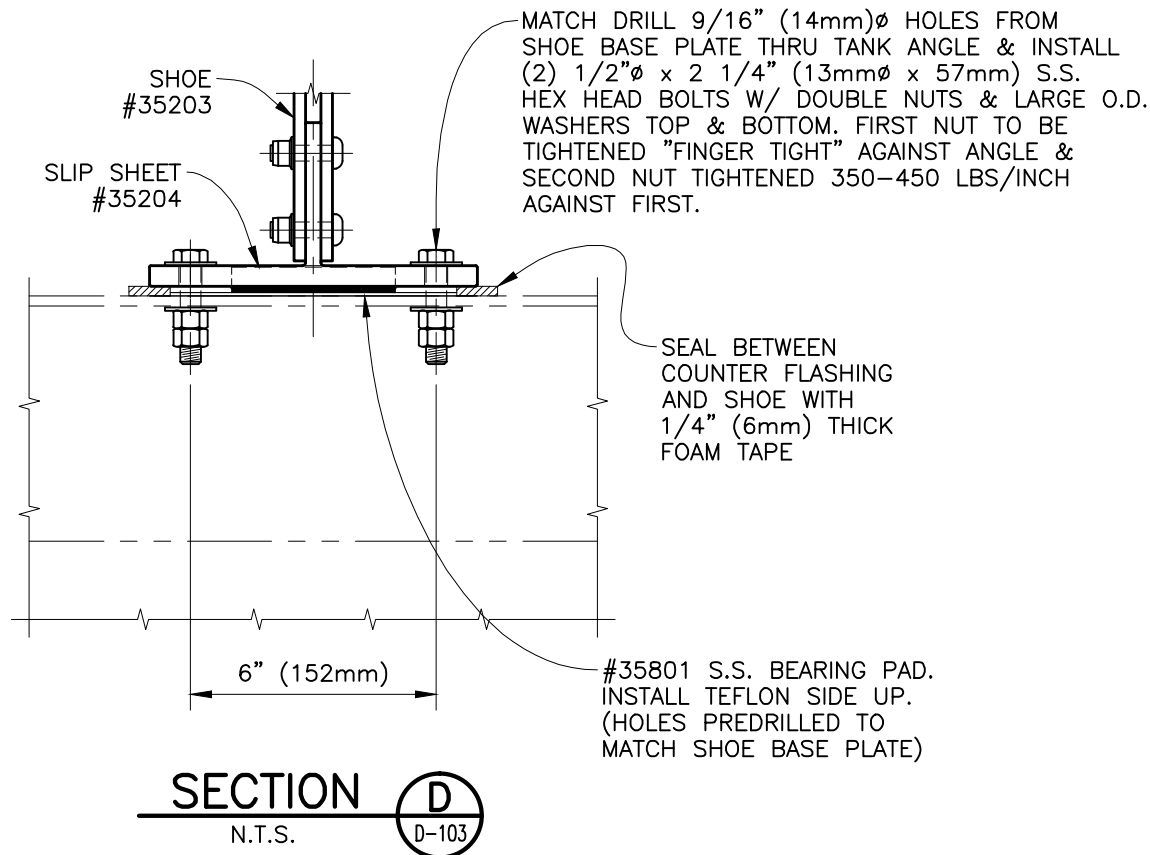
**CST optidome**  
COVERS

GARDENA, CA CONROE, TX

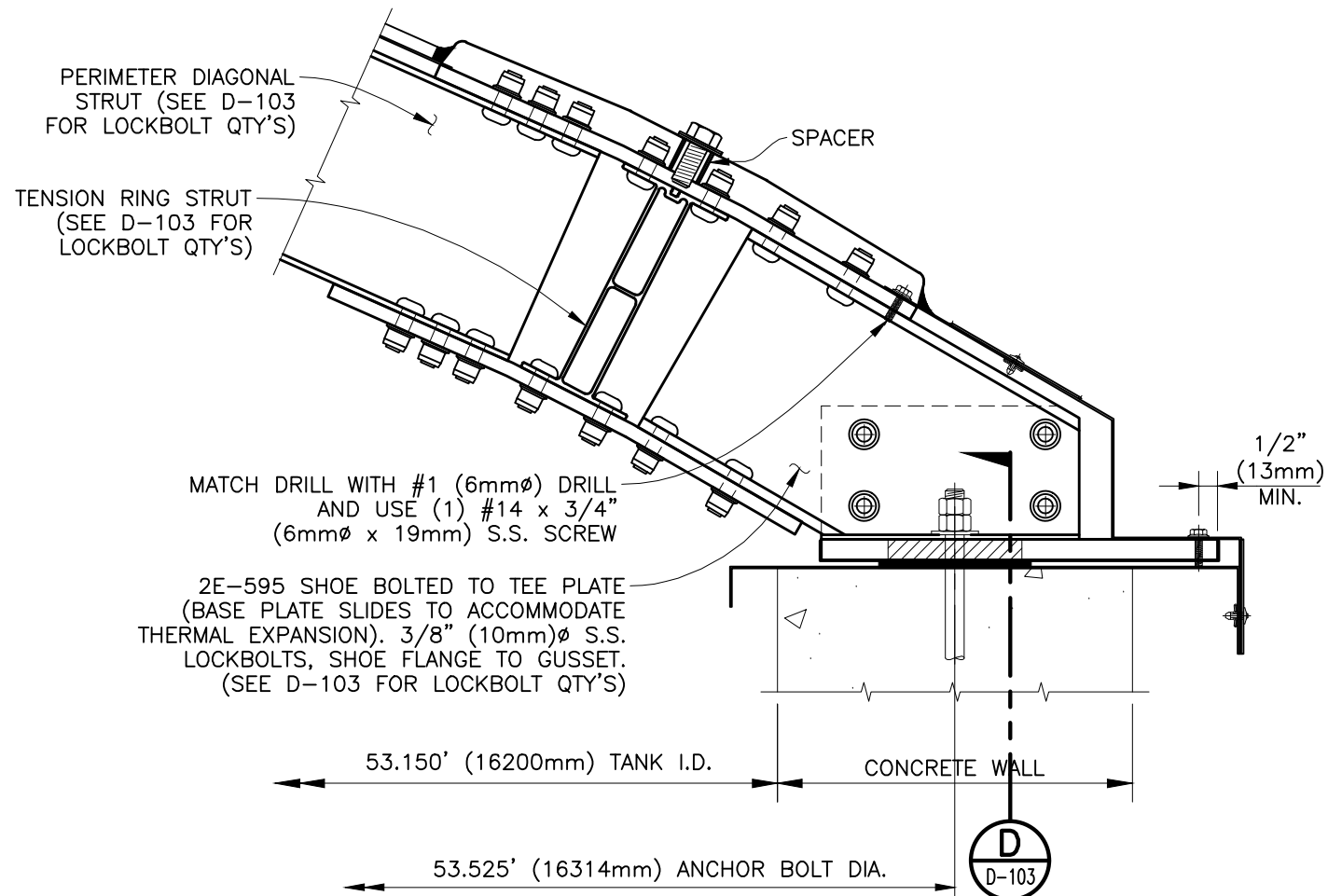
ALL DESIGNS, IDEAS, PROCESSES OR DEVELOPMENTS ORIGINATED OR DISCLOSED BY CST COVERS ARE PROPRIETARY, PATENTED OR THE SUBJECT MATTER FOR PATENT APPLICATION, AND MAY NOT BE REPRODUCED WITHOUT WRITTEN PERMISSION FROM CST COVERS

DWG. TITLE	TYPICAL STRUT & GUSSET JOINT DETAIL		
PROJECT DESCRIPTION	(1) DOME FOR 53.15'± I.D. TANK		
JOB NO.	DRAWING NO.	REVISION	CUST. CONTR. NO.
	D-102	0	

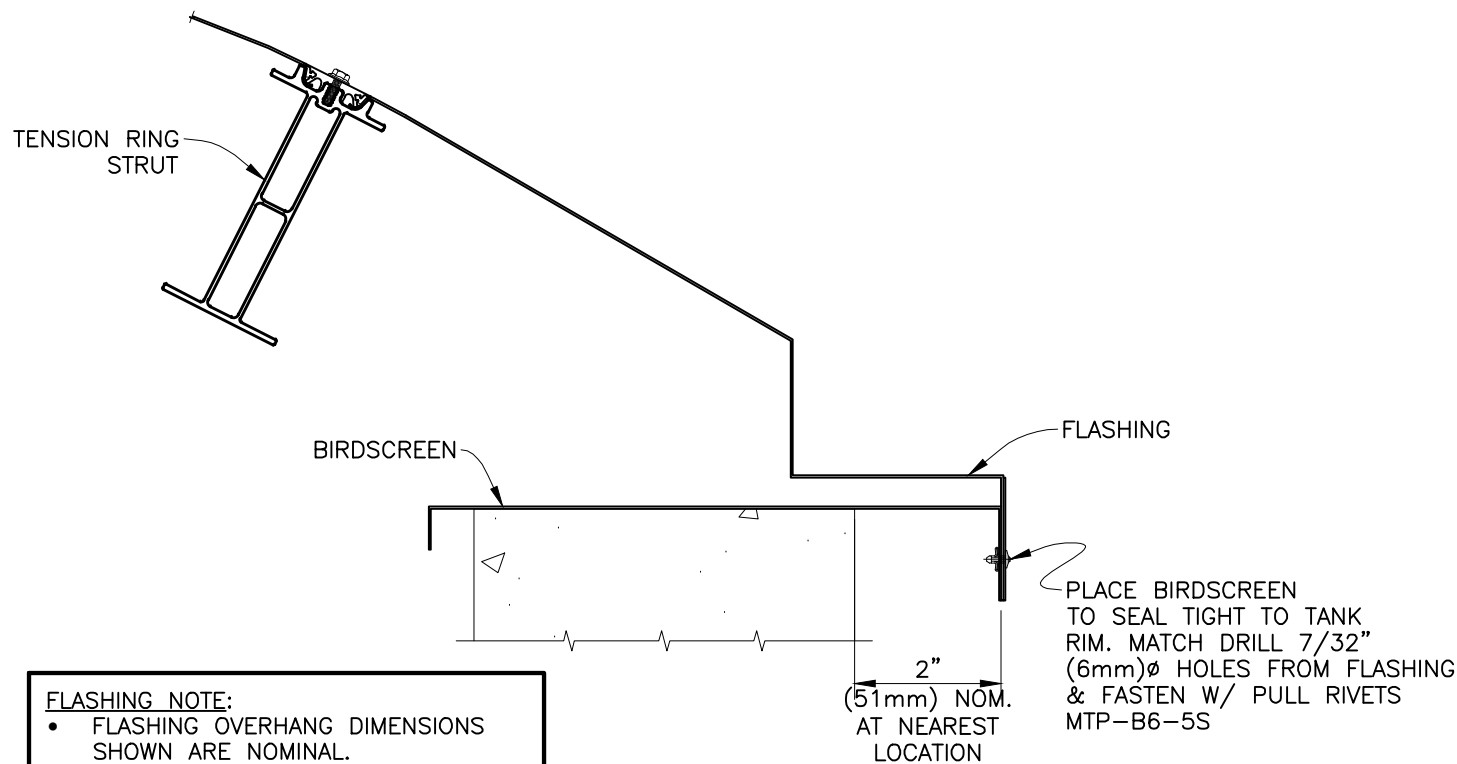
REV.	DATE:	DRWN BY	CHKD BY	DESCRIPTION
0	01/06/16	kmw		FOR APPROVAL
CUSTOMER				



SECTION **D**  
N.T.S. D-103



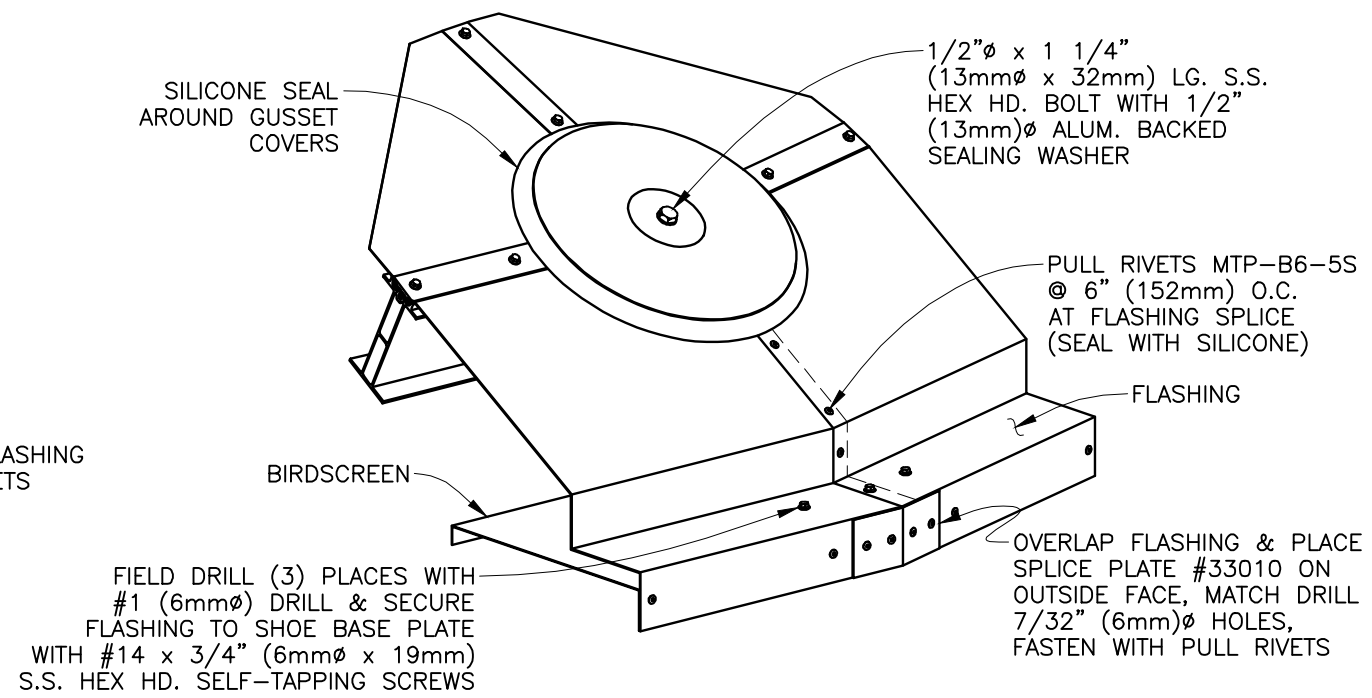
SECTION **B**  
N.T.S. D-101



**FLASHING NOTE:**

- FLASHING OVERHANG DIMENSIONS SHOWN ARE NOMINAL.
- ACTUAL MAX & MIN TO VARY BASED ON TANK OUT-OF-ROUND AND DOME'S EXPANSION AND CONTRACTION.

SECTION **C**  
N.T.S. D-101

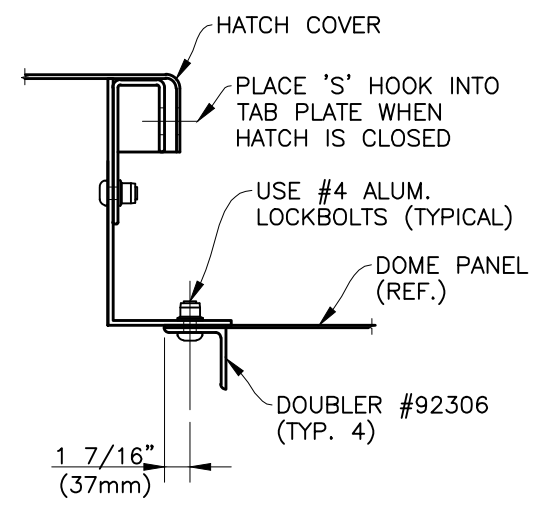
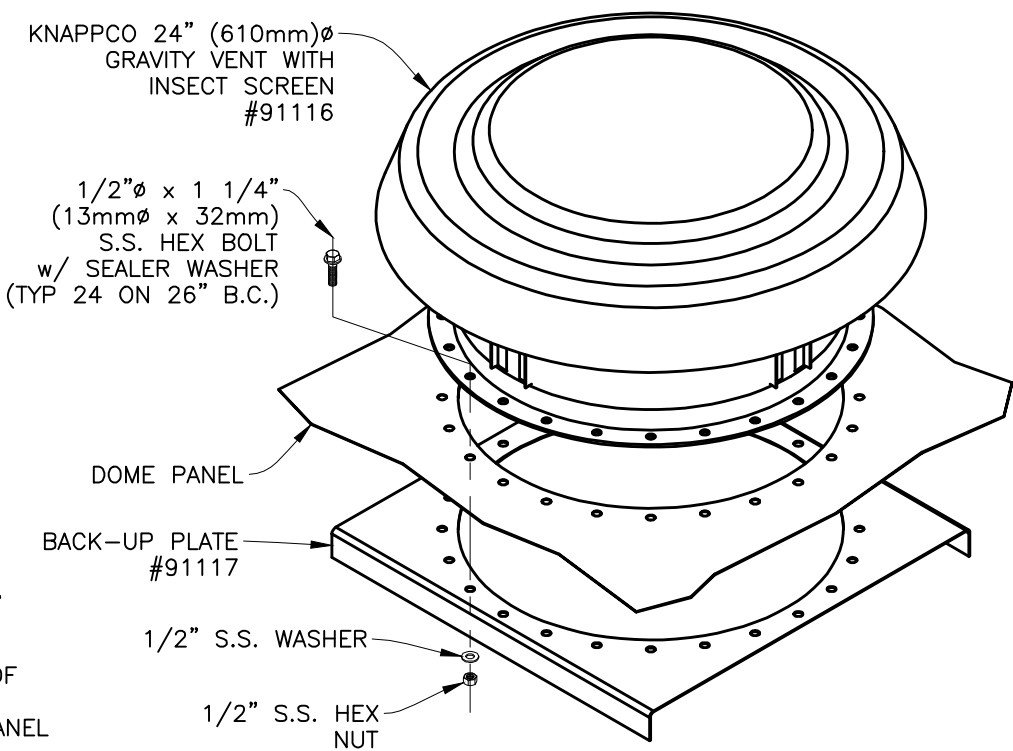
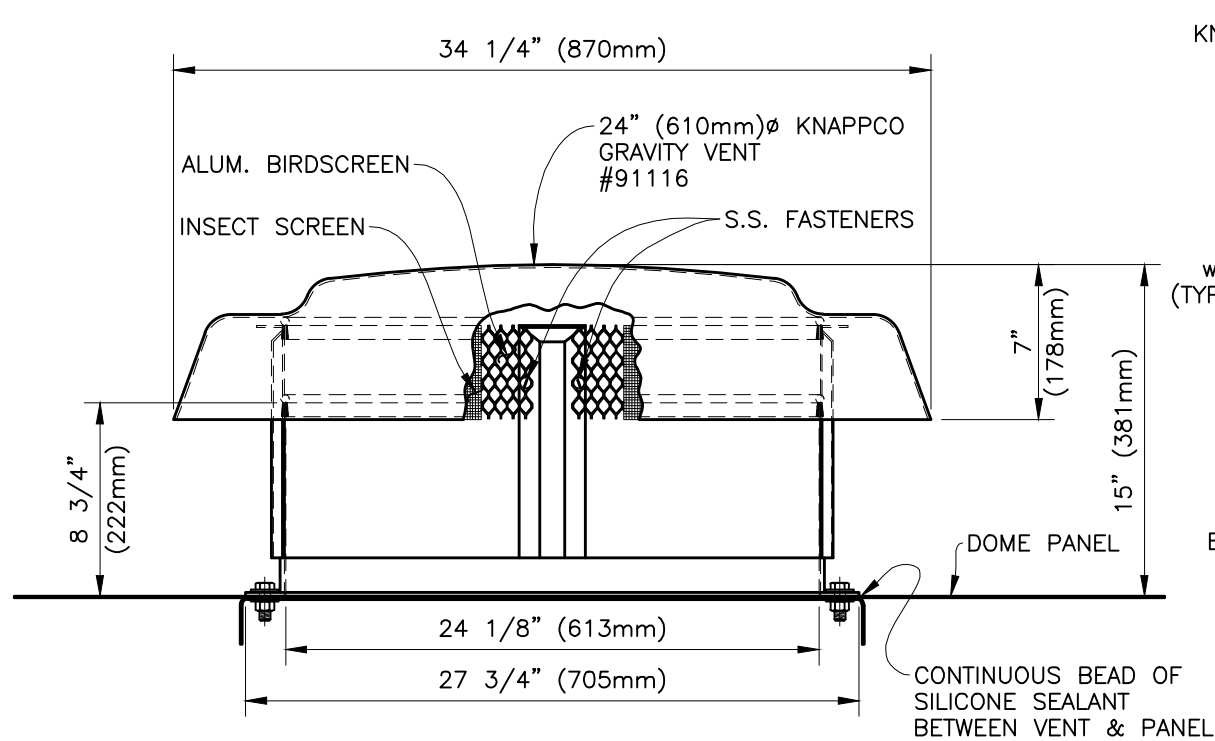


TYP. PIER GUSSET  
N.T.S.

DWG. TITLE	SHOE, TENSION RING & FLASHING ASSEMBLY	
	PROJECT DESCRIPTION	
JOB NO.	(1) DOME FOR 53.15' ± I.D. TANK	
	DRAWING NO. D-103	
REV.	0	01/06/16
	kmw	DATE:
FOR APPROVAL	CHKD BY	DESCRIPTION
	CUSTOMER	

**CST optidome**  
COVERS  
GARDENA, CA CONROE, TX

ALL DESIGNS, IDEAS, PROCESSES OR DEVELOPMENTS ORIGINATED OR DISCLOSED BY CST COVERS ARE PROPRIETARY, PATENTED OR THE SUBJECT MATTER FOR PATENT APPLICATION, AND MAY NOT BE REPRODUCED WITHOUT WRITTEN PERMISSION FROM CST COVERS

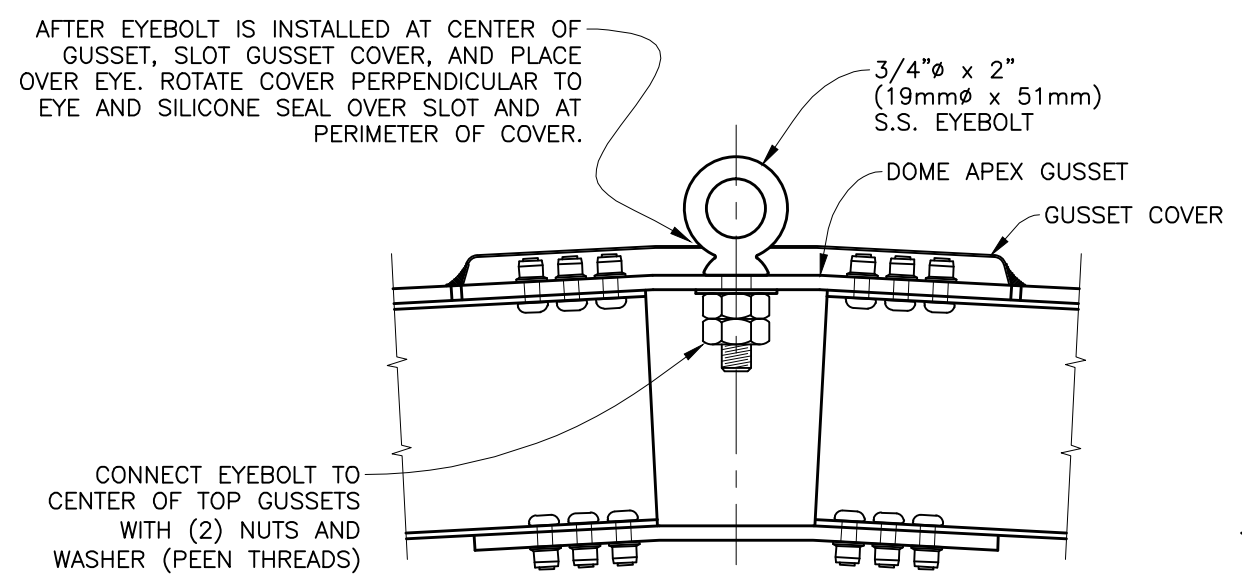


**NOTE:**  
VENT PERFORMANCE DATA IS PROVIDED BY THE VENT MANUFACTURER PLEASE SEE THE KNAPPCO VENT CUT SHEET FOR INTAKE & RELIEF CAPACITIES.

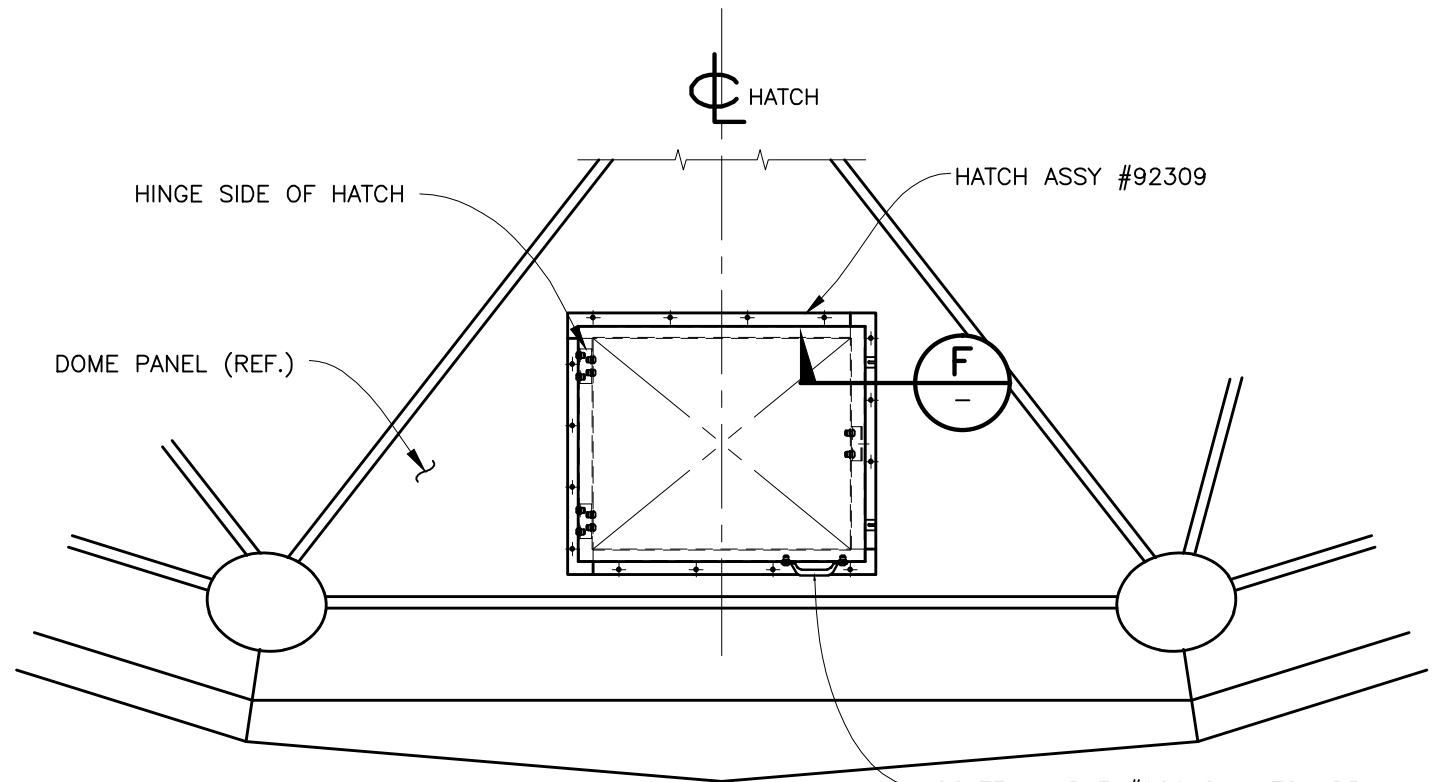
**DETAIL 1**  
24" (610mm) KNAPPCO D-101 ALUMINUM GRAVITY VENT N.T.S.

**VENT ISOMETRIC VIEW**  
N.T.S.

**SECTION F**  
N.T.S.



**DETAIL 2**  
S.S. EYEBOLT AT DOME APEX N.T.S.



**DETAIL 3**  
3'-0" (914mm) SQ. ACCESS HATCH N.T.S.

**NOTE:**  
EYEBOLT FOR DOME ACCESS MAINTENANCE ONLY BY QUALIFIED PERSONNEL. EYEBOLT TESTED FOR OSHA FALL PROTECTION - MUST BE INSPECTED OR REPLACED AFTER FALL OR OTHER SHOCK LOADING. REMOVE ANY TEMPORARY SAFETY LINE IMMEDIATELY AFTER USE.

DWG. TITLE	VENT, EYEBOLT & HATCH DETAILS			
	PROJECT DESCRIPTION (1) DOME FOR 53.15' ± I.D. TANK			
JOB NO.	DRAWING NO.	REVISION	CUST. CONTR. NO.	FOR APPROVAL
	D-104	0		DESCRIPTION
REV. DATE:		kmw	CHKD BY	
0 01/06/16				
CUSTOMER				

**CST of a Dome**  
COVERS  
GARDENA, CA CONROE, TX  
ALL DESIGNS, IDEAS, PROCESSES OR DEVELOPMENTS ORIGINATED OR DISCLOSED BY CST COVERS ARE PROPRIETARY, PATENTED OR THE SUBJECT MATTER FOR PATENT APPLICATION, AND MAY NOT BE REPRODUCED WITHOUT WRITTEN PERMISSION FROM CST COVERS